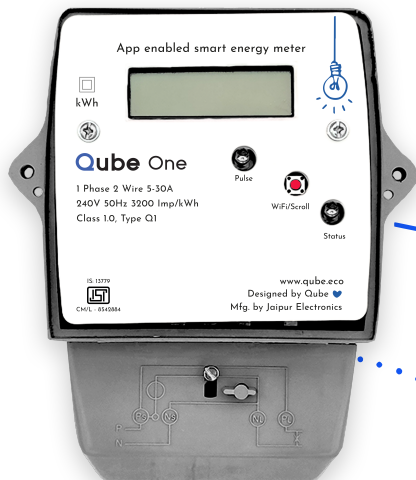




Qube One

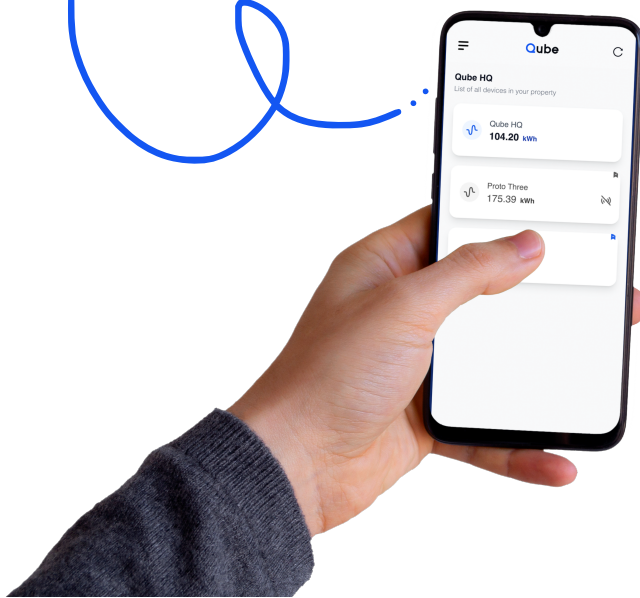
App enabled smart energy meter

Crafted in Bengaluru ♥



“Experience smart metering and automated billing
at your finger tips”

A blue line connects the text to a smartphone in the bottom right.



What is Qube One?

Qube One is a smart energy meter that allows you to monitor the energy consumption of home, office, building or industrial equipment from the comfort of your mobile phone or laptop.

Metering data can be retrieved over WiFi / Cellular / RS485 and allows you to monitor your readings from anywhere across the world. The meter provides the ability to engage / disengage power being supplied to the load. This enables you to disconnect power incase of non-payment of electricity bill.

In case you want to integrate our meters into your existing dashboard or ERP, we also provide an API endpoint where you can get all the data. Readings from one meter can be shared with multiple people using a simple link.

Our energy meters have Class 1 accuracy and is compliant to IS 13779 standard.

Features



Single & Three Phase
Multifunction meter



WiFi Enabled



Class 1.0 Accuracy



Prepaid / Postpaid



Secure encrypted
communications



Share meter readings
with simple link



IS 13779 compliant



Unbreakable
Polycarbonate housing



Custom Tarif for each
meter



Well-designed mobile
application



Load control (relay)
to control power



Real time data



API integration



OTA Update Ready



Historical data
stored on server



LCD display with
live readings



Easy Installation



Network connection
status LED



















Ready to use
Web Dashboard



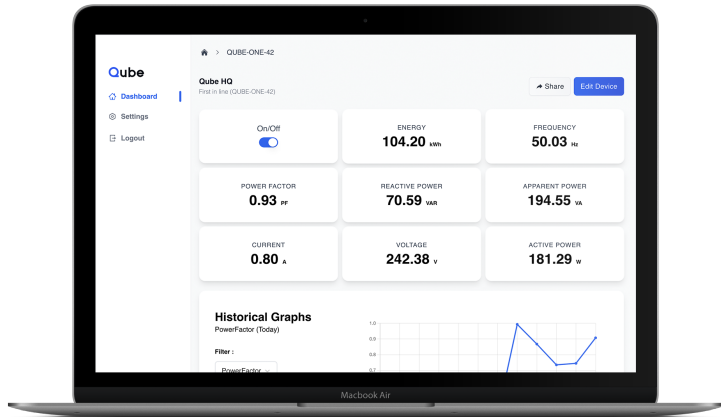
Tamper Proof

Comparison

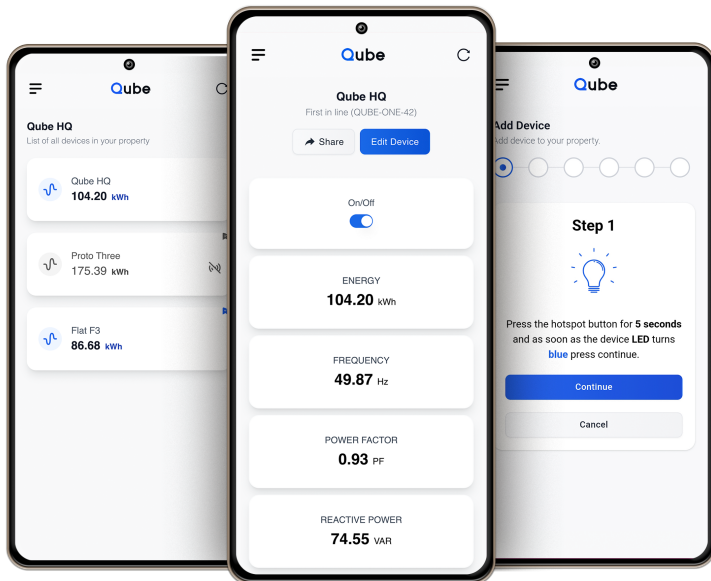
Benefits	Other Meters	Qube Meters
Monitors energy consumption		
Historical data storage		
Realtime values on mobile / web dashboard		
Engage / Disengage power		
Energy consumption analytics		
Custom meter tariff		
Use as prepaid/postpaid		
Share metering data with anyone		

Mobile App and Web Platform

1. OTP based authentication
2. See realtime data from your meters
3. Multiple energy meters can be added to a single account
4. Share meter data with anyone using a simple link
5. Public API integration
6. Available on iOS App Store and Android Play Store
7. Meter data stored on server
8. Engage / Disengage power to load
9. Energy and power consumption analytics for each meter
10. Set custom tariff for each energy meter



Dashboard on Web Platform



Key mobile interfaces

Technical Specification

Electrical

Connection Type	Direct Connected
Wiring configuration	Single Phase, Two wire
Voltage range	230/240 V (P-N)
Current range	5-30 A
Accuracy class	1.0
Mains Frequency	50 Hz

Compliance

Standards	IS 13779
Meter Constant	3200 imp/kWh

Mechanical

Dimension	168 x 110 x 75 mm
Weight	370 gm
Enclosure	Polycarbonate
Ingress Protection	IP 51



Measurement

Energy Type
Energy Registration
Parameters

Active Energy
Forward or Import
1. Voltage (V)
2. Current (A)
3. Active Power (W)
4. Apparent Power (VA)
5. Reactive Power(VAr)
6. Frequency (Hz)
7. Active Energy (kWh)
8. Power Factor

Communication

Network
Interval

WiFi / RS485 / Cellular
5 Seconds / Variable



Applications



Hotels & PGs



Coworking Spaces



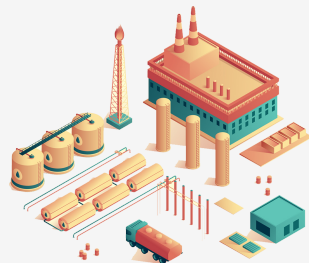
Residential Houses



Coliving Spaces



Commercial Buildings



Industrial Facilities

Other Products

Connection Type

Wiring type required to connect the meter

Single Phase

2 Wire

Three Phase

3/4 Wire

Network Options

Communication with app & dashboard

Basic

No communication.
Shows 8 parameters on LCD

WiFi

Connect your meter using
your home or office network

RS485

Uses Modbus protocol for
industrial applications

Cellular

Connect your meter using a
SIM

Load Control

Load control of the meter

With Relay

Ability to automatically
engage / disengage power

Without Relay

No ability to control power
output

Contact Details

Address: FF2, Amrutha Priya, Dasarahalli
Main Road, Hebbal, Bengaluru - 560024

Email: apoorva@qube.eco,
hrithik@qube.eco,
deep@qube.eco

Phone: +91 70071 19127,
+91 99821 68317

Website: <https://qube.eco>

